

S e m i n a r s 2 0 1 2

Hitachi Real-time Tissue Elastography (HI-RTE) and Ductal Echography



HI-RTE

Hitachi Real-time Tissue Elastography

Aix-en-Provence | France
Tutor: Dr. Dominique Amy



**SENOLOGIC
INTERNATIONAL
SOCIETY**

HI-RTE & Ductal Echography | 09.2011 | a+w

Seminar Venue
MEDICAL CENTRE
21, avenue Victor Hugo
F-13100 Aix-en-Provence, France
Phone: +33 (0)4 42 261-155
E-mail: domamy@wanadoo.fr

Registration Fee
€ 400,00
SOCIETE GENERALE CERGY
Bank Code No.: 30003
Bank Branch Code No.: 01658
Account No.: 00020450247
Test No.: 21

Hotel Accommodation
TOURISM OFFICE
F-13605 Aix-en-Provence, France
Phone: +33 (0)4 42 161-161
Fax: +33 (0)4 42 161-162
E-mail: infos@aixenprovencetourism.com

HITACHI
Inspire the Next

Hitachi Medical Systems S.A.S
18 avenue du Québec
BP 356
Villebon-sur-Yvette
F-91959 Courtaboeuf Cedex

Phone +33 (0)1 69 86 12 34
Fax +33 (0)1 69 29 00 23
E-mail k.pickelein@hitachi-medical-systems.com
www.hitachi-medical-systems.com

It couldn't be easier: please mark the date of the seminar, fill in the application form and send it by post. Or quicker, send it by fax to **+33 (0)1 69 29 00 23**.

Yes, I would like to take part in the following seminar date:

- | | | | | |
|-----------------------------------|-------------|------------------------------------|----------------------------------|----------------------------------|
| <input type="checkbox"/> January | 26-27, 2012 | <input type="checkbox"/> July | 26-27, 2012 | |
| <input type="checkbox"/> February | 23-24, 2012 | <input type="checkbox"/> September | 27-28, 2012 | |
| <input type="checkbox"/> March | 29-30, 2012 | <input type="checkbox"/> October | 25-26, 2012 | |
| <input type="checkbox"/> April | 26-27, 2012 | <input type="checkbox"/> November | 29-30, 2012 | |
| <input type="checkbox"/> May | 24-25, 2012 | Number of participants: | | |
| <input type="checkbox"/> June | 28-29, 2012 | <input type="checkbox"/> 1 Pers. | <input type="checkbox"/> 2 Pers. | <input type="checkbox"/> 3 Pers. |
- Please send me the separate announcement in combination with the International Piano Festival "La Roque D'ANTHERON".

Address/stamp

I hereby register to attend the seminar
Hitachi Real-time Tissue Elastography (HI-RTE)
and Ductal Echography in Aix-en-Provence.

Date

Signature

Please stamp
sufficiently!

Registration

Hitachi Medical Systems S.A.S
18 avenue du Québec
BP 356
Villebon-sur-Yvette

F-91959 Courtaboeuf Cedex

P r e f a c e

Dear Colleagues,

For years, breast examination techniques have failed to give a precise analysis of the mammary gland anatomy. Typically, the “corpus mammae” is unclear, difficult to define and hard to diagnose. Radial Ductal Echography is a new method for very efficient breast analysis. This radial examination technique provides:

- **Understanding of the lobar anatomy**
- **Analysis of all new anatomical changes of the lobules or ducts**
- **Early detection of suspicious millimetric lesions**

The technique is easy to reproduce; independent of the sonographer and interpretable by all clinicians.

Hitachi Real-time Tissue Elastography (HI-RTE) is an innovative modality for the assessment of tissue elasticity. It has a complementary diagnostic role to the B-mode imaging, providing further criteria for the characterization of lesions. Second generation HI-RTE includes the Strain Ratio, a quantitative method for analyzing the Elastography score.

Instruction in both Radial Ductal Echography and Elastography associated with the new 3D/4D techniques will be given. The success of the seminar lies in extensive “hands-on” sessions with a small group of participants.

We look forward to seeing you in Aix-en-Provence,

Dr. Dominique Amy
in cooperation with the
“Senologic International Society”

S e m i n a r D a t e s

Hitachi Real-time Tissue Elastography (HI-RTE) and Ductal Echography

■ January	26–27, 2012
■ February	23–24, 2012
■ March	29–30, 2012
■ April	26–27, 2012
■ May	24–25, 2012
■ June	28–29, 2012
■ July	26–27, 2012*
■ September	27–28, 2012
■ October	25–26, 2012
■ November	29–30, 2012

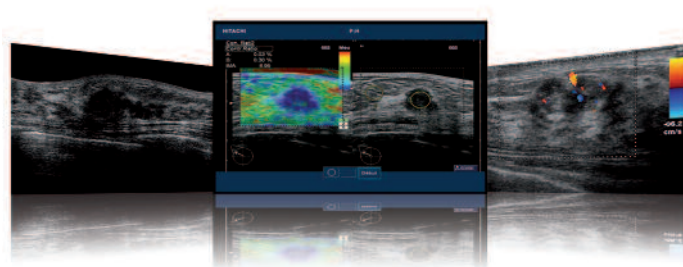
The seminars will start Thursday 8.30 am
to Friday 5.00 pm

Seminar Language

English/French

Tutor

Dr. Dominique Amy
SIS Board Member, Aix-en-Provence



*In combination with the International Piano Festival
“La Roque D’ANTHERON”, see separate announcement.



R e g i s t r a t i o n

Hitachi Real-time Tissue Elastography (HI-RTE) and Ductal Echography

